

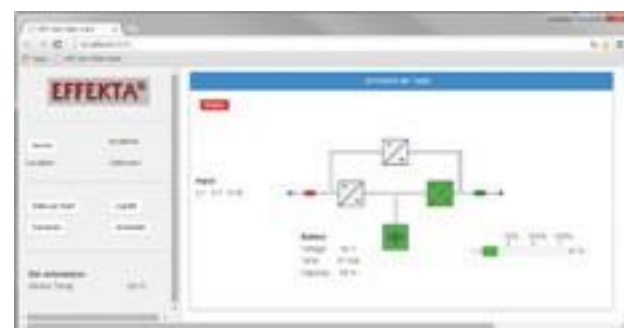
UPS management Software

The UPS management software solution PowerShut Plus runs as a client/server application for heterogeneous networks or local computers. It works on all common Windows OS, Novell, Linux and all current Unix derivatives. It also includes an SNMP agent for Windows NT and Novell. All Servers on the network can be shut down via RCCMD (Multiserver-Shutdown). The software provides all important UPS information such as battery level, temperature, condition of line-voltage and others in clear graphical displays. Disruptions can be reported by e-mail, mobile phone or fax.

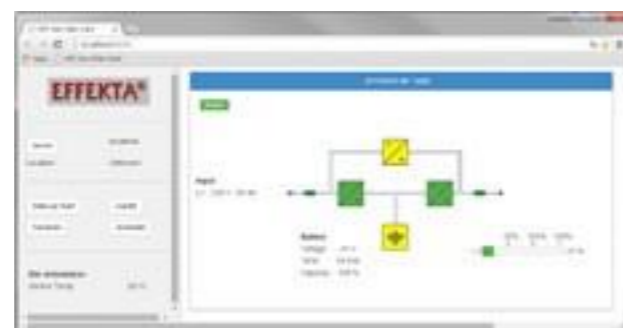
UPS management SNMP CS141

CS141 adapters are available as stand-alone version and as a slot card. Both constructions are to have a fully equipped standard version and as a budget version is excluded functionality. For some UPS models you particularly compact and space saving of the CS 141 Mini available.

Software view



Line fail



Normal operation

Characteristics

- ☛ Available for Windows for all common Windows OS, Netware, Macintosh, UNIX and VMS
- ☛ UPS monitoring via floating contacts or serial interface
- ☛ Local or network shutdown on up to several hundred computers
- ☛ Integrated SNMP subagent (RFC 1628)
- ☛ Graphical interface with all UPS information
- ☛ Graphical interface on UNIX, MAC, VMS
- ☛ Event-based dispatch of network messages
- ☛ Event-based dispatch of e-mails and SMS
- ☛ Logging of all UPS status information and measurements in MS-Excel file
- ☛ Schedulers for time-controlled execution of reboot, shutdown etc.

Characteristics

- ☛ Compilation of data from EFFEKTA UPSs via one of the serial ports.
- ☛ Providing status information on several webpages through the embedded Web server.
- ☛ Execution of user-defined events, such as the controlled shutdown of multiple computers via RCCMD in case of system hazard.
- ☛ User notification via email, SMS, network messages status reports and event histories
- ☛ Data analysis with graphical display
- ☛ Termination of standard tasks
- ☛ Expandable by a SENSORMANAGER, for connecting various environmental sensors
- ☛ Optional: additional MODBUS functionality

Specifications

CS 141	Professional		Budget		Mini
	External	Slot	External	Slot	Slot
Design / Version	12V (min. 9V, max. 30V DC), 150 mA				
Power supply	12V (min. 9V, max. 30V DC), 150 mA				
Size W x L x H	69 x 126 x 35 mm	60 x 120 x 29 mm	69 x 126 x 35 mm	60 x 120 x 29 mm	42 x 80 x 26 mm
Weight	210 g	66 g	210 g	66 g	36 g
Ethernet	10/ 100 Mbit Base-T auto sense				
RS232 Interface	2	2	1	1	2
RS485 Interface	1	-	-	-	-
USB Interface	1	-	1	-	-
AUX Interface	1	1	-	-	-
MIB	RFC 1628 and private extension				